

# River Annan 2013 Trout Sampling Days

For several years now the River Annan has used anglers to get data on the health of the fish stocks in the winter fishery. Primarily this has been targeting the Grayling stock but of course other fish species have been caught. This has been a really useful project as we are now in a better position to understand the abundance and stock structure of the fishery.

We are now going to repeat the exercise this spring and early summer and have a look at the status of the brown trout fishery. In particular we want to get to know what the size ranges of the fish are in different parts of the river and what the catch per unit effort is in different parts of the river.

In addition to this we will be trying to get information on what insects are hatching and the times that these are hatching.

The format will be exactly the same as before with anglers being used as sampling machines and being given different parts of the river to fish for a set period. As before we will be meeting at 8:30AM at the Café 91 in Lockerbie for registration. The owners of various parts of the fishery have given up their fishing on the days in question FOC but anglers will be asked to make a £10 donation to the River Annan Trust. The dates to put in the diary are: Saturday 13th Apr, Saturday 11th May, Sunday 9th Jun, Sunday 14th Jul and the 11th August.

All the fishing will be by fly only and 100% catch and release

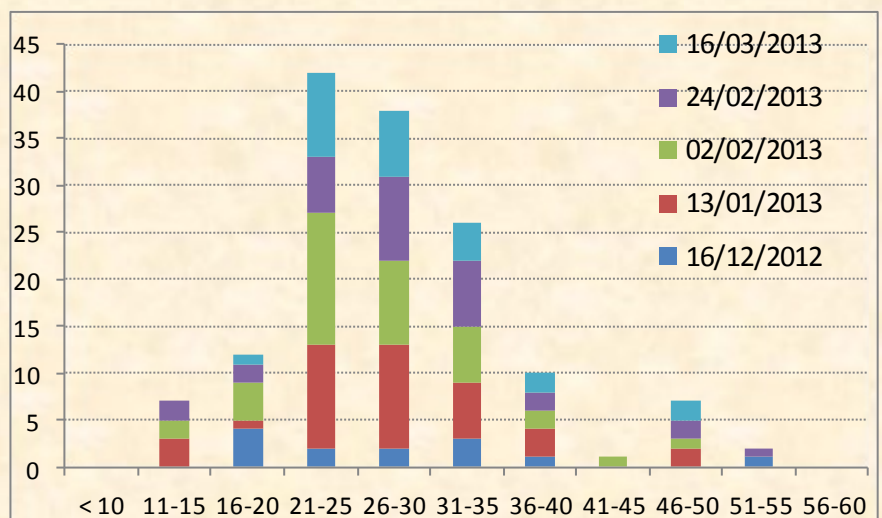
If you are interested in helping please contact Nick or Michael on 07710 331079 or 07872 128739 or e-mail [nick@annanfisheryboard.co.uk](mailto:nick@annanfisheryboard.co.uk)

For more info check out:

[www.fishannan.co.uk](http://www.fishannan.co.uk)



*A 5lb summer brownie being returned in 2012*



*Lengths and numbers of trout caught out of season on the Annan 2012/2013 winter*



*The iconic March Brown, this insect is important to anglers but is increasingly rare in the UK, information about sightings of this animal will be useful as the Annan is one of the few remaining strongholds.*